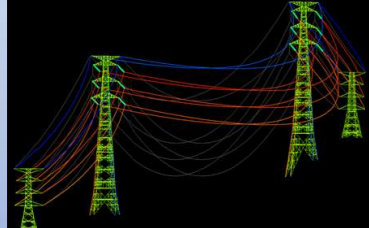
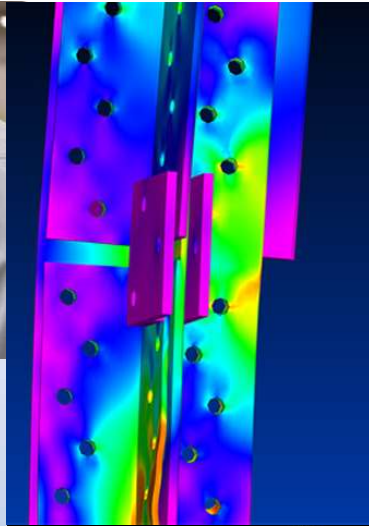
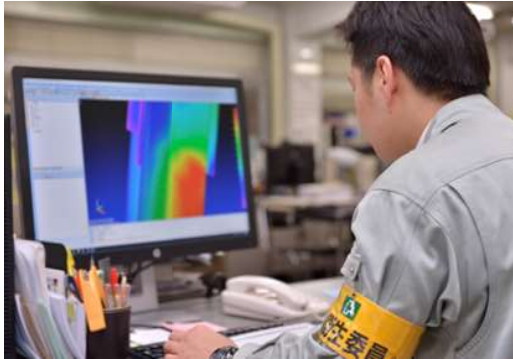
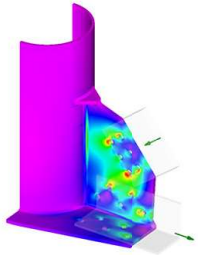




## Design Analysis Experiment



In recent years, there has been a concern about abnormal weather such as increased intensity of hurricanes (typhoon), heavy rains and larger-than-expected earthquakes. Under these circumstances, it is important to ensure that electrical transmission and communication towers, which are the core infrastructure of society, kept in good condition even in harsh environments. We fulfill our social responsibility by creating optimal and up-to-date designs based on advanced knowledge gained through years of various analyses, and experiments, and make reliable proposals to our customers.

## Office Information



Wakamatsu Factory

### Headquarter

1-6-27, Shinsuna, Koto-ku, Tokyo  
tel. (+81) 3-3645-3186  
fax. (+81) 3-3647-3253

### Wakamatsu Factory

1-7-1, Kitahama, Wakamatsu-ku, Kitakyushu-City, Fukuoka  
tel. (+81) 93-751-2715  
fax. (+81) 93-761-7316



Headquarter



日本鉄塔工業株式会社  
Japan Steel Tower Co., Ltd.





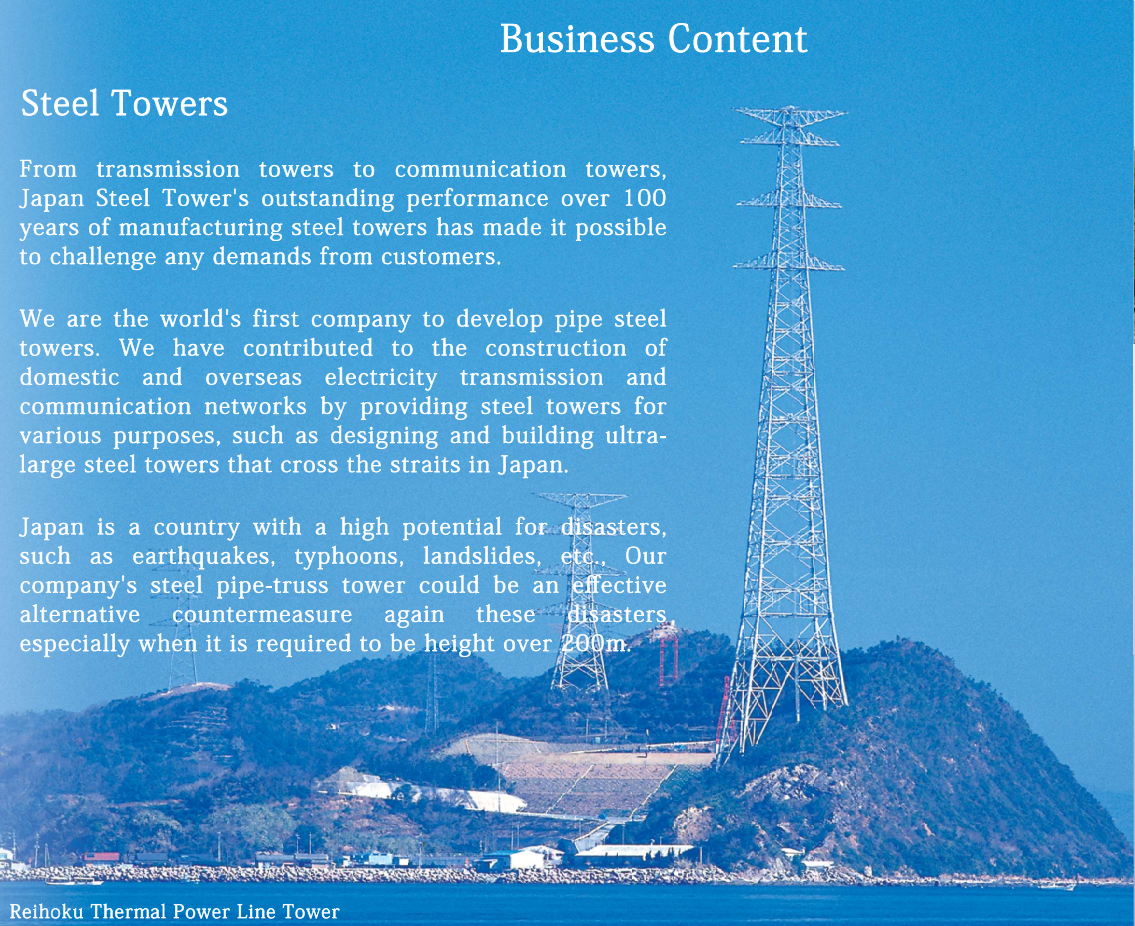
# Business Content

## Steel Towers

From transmission towers to communication towers, Japan Steel Tower's outstanding performance over 100 years of manufacturing steel towers has made it possible to challenge any demands from customers.

We are the world's first company to develop pipe steel towers. We have contributed to the construction of domestic and overseas electricity transmission and communication networks by providing steel towers for various purposes, such as designing and building ultra-large steel towers that cross the straits in Japan.

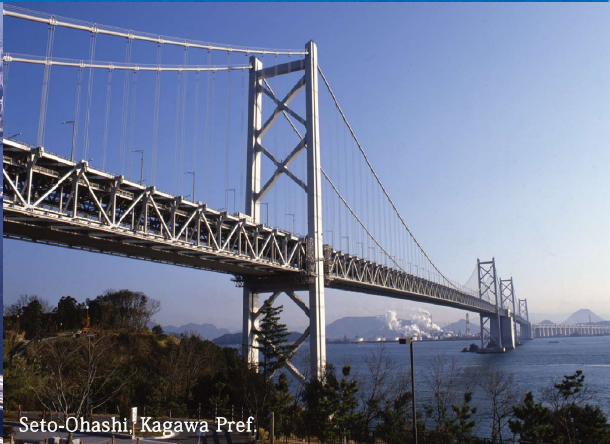
Japan is a country with a high potential for disasters, such as earthquakes, typhoons, landslides, etc.. Our company's steel pipe-truss tower could be an effective alternative countermeasure against these disasters, especially when it is required to be height over 200m.



Reiho Thermal Power Line Tower



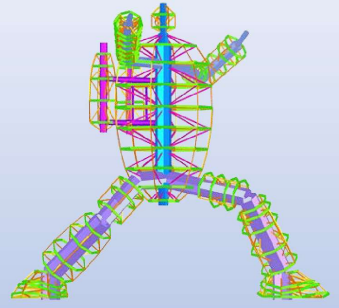
Rainbow Bridge, Tokyo



Seto-Ohashi, Kagawa Pref.

## Bridge

Our company entered the bridge business in 1963 and for more than half a century, we have participated in various long-span bridge projects in Japan. We are the first company in Japan to manufacture hot-dip galvanized bridges. It is rust-proof and has very low maintenance costs. In recent years, we are actively working on bridge reinforcement and repair projects, such as bridge collapse prevention system installation and bearing replacement projects.

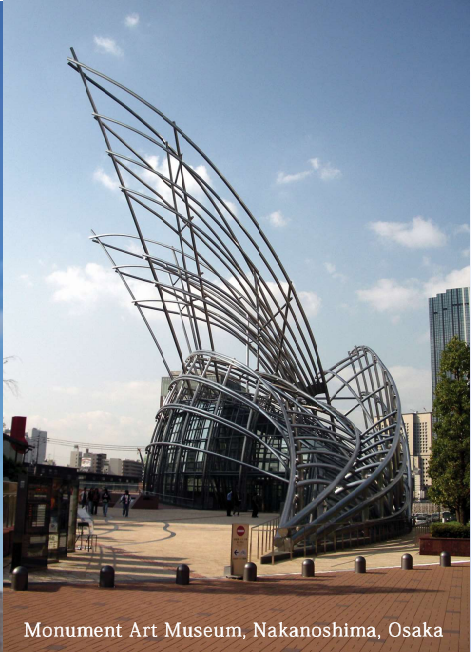


## Steel Structure

Our Company have participated in famous special steel structure projects such as TOKYO SKYTREE® and Gigantor 28th Monument, based on our advanced technical capabilities and high experience over many years in the steel tower and bridge business. We also manufacture various special steel structures, such as disaster prevention poles and solar cell racks, according to customer needs. Through our unique custom-made design and manufacturing capabilities, we continue to provide high-quality products that satisfy our customers.



Tokyo Skytree



Monument Art Museum, Nakanoshima, Osaka

## Long Life Maintenance



Today, countermeasures for aging social infrastructure that have been built in the past have become a social issue. Under these circumstances, we were among the first to focus on extending the service life and maintenance of steel structures. Now, we have successfully developed our own maintenance system, and actively propose inspection, repair, and reinforcement for existing steel structures.

